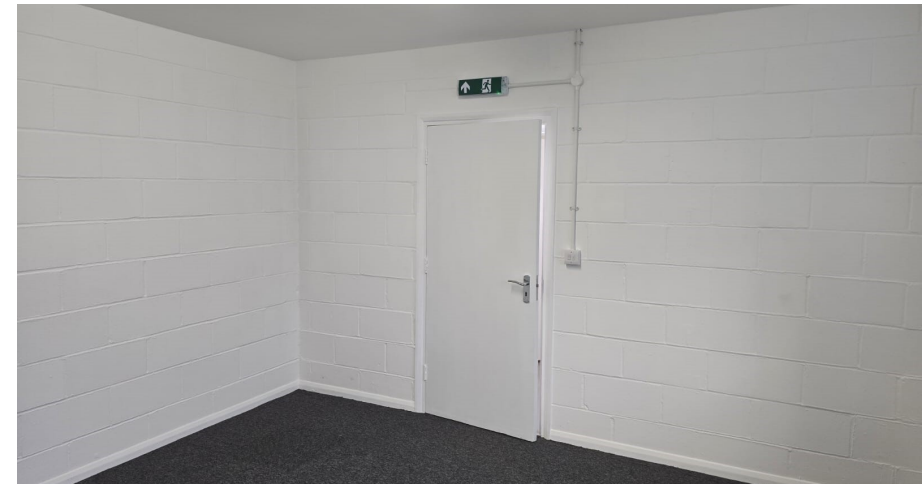
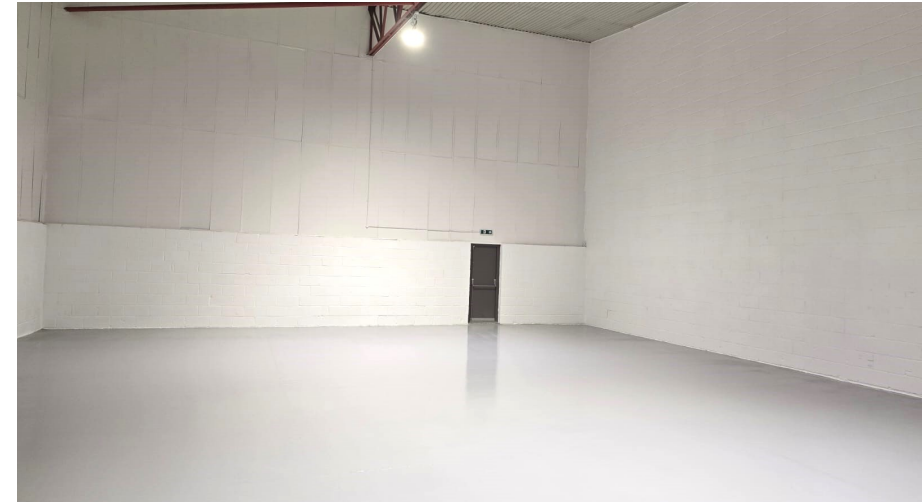


Unit 3

Buzzard Creek Industrial Estate, Barking
IG11 0EL

UNIT TYPE Warehouse
TOTAL AREA 2,481 Sq Ft / 230 Sq M
RENT £3,750.00 PCM + VAT

Rarely available light industrial unit in Barking



UNIT TYPE Warehouse
TOTAL AREA 2,481 Sq Ft / 230 Sq M

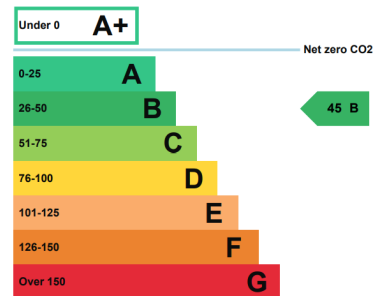
RENT £3,750.00 PCM + VAT

Prices shown are exclusive of VAT and business rates.
Service charge and insurance costs may also apply.

UNIT FEATURES & AMENITIES

- 3 Phase Power
- Allocated Parking
- Energy Efficient Lighting
- Office Space
- Roller Shutter

EPC RATING



DESCRIPTION

Unit 3 is a 2,481 sq.ft refurbished light industrial ground floor unit in Barking. With 18 units of circa 2,500 sq ft each, Buzzard Creek is a bustling and thriving industrial estate with generous parking and yard space suitable for HGV vehicles.

LOCATION

Located on River Road, the estate benefits from a secure gated access point and offers easy access to the A13 at Barking.



Alex Cherkas
+44 (0) 20 7016 1535
acherkas@capitalindustrial.co.uk

Capital Industrial prepares sales and letting particulars diligently and all reasonable steps are taken to ensure that they are correct. Capital Industrial will not be under any liability to any purchaser or tenant or prospective purchaser or tenant in respect of them. If a property is unoccupied, Capital Industrial may not have all the information required by a prospective purchaser or tenant in its possession, may not be able to obtain it and may not be able to verify all the information which it does hold. The mention of appliances and/or services or heating/cooling system or any other plant or fenestration systems in this description does not imply that they are in working order. Prospective purchasers should make their own investigations before finalising any agreement to purchase or lease. Note: Any maps or plans included in this document are obtained from Promap under our Ordnance Survey Business Use Copyright licence ES 100017692 or are Goad Digital Plans including mapping data licensed from Ordnance Survey Crown Copyright 2007 under licence number PU 100017316